

# WiFi Smart Socket

Item 7967

Operating Instruction



Designed for indoor and outdoor use, you can also see real-time power consumption through the app.

Note: The wall socket must be within range of Wifi to work.

## 1. Product Overview

Wi-Fi smart plug is a kind of smart products to control electric appliance via Wi-Fi wireless network. Via using smart phone client-side 【Emax Smart Home】 , user can switch the power on/off in any available Wi-Fi network areas. It also supports remote control, multi-timer tasks and countdown task. What's more, it supports status tracking and device share.

According to these features, users can efficiently control house appliances like outdoor lights, air source heat pump and car heating, etc. Not Only smart, But Also Reliable and Energy-efficient.

## 2. Technical Specification

Voltage: 230VAC, 50 Hz

Max Load: 16(2) A, 3600W

WIFI Frequency: 2.4GHz

Wireless Standard: IEEE802.11b/g/n

IP44 indoor and outdoor use

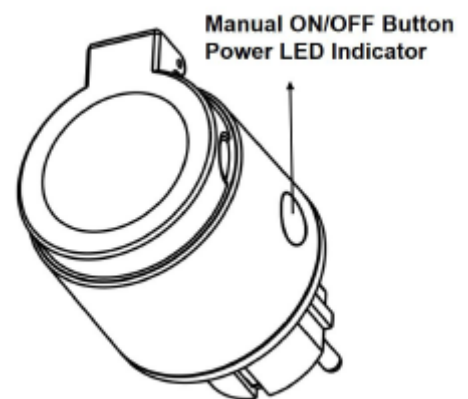
Must have WiFi coverage

Smart Life application (Android and iOS)

TUYA connection

Material: PC

Color black



## 3. Product features

- Support for device sharing
- Timer
- Descending timing
- Support for status monitoring and timely feedback

## 4. Checklist before using Smart Socket

- You require a router/modem with internet and Wi-Fi access.
- Your smart phone or tablet device must be able to connect to the router/modem with internet.

## 5. Installation

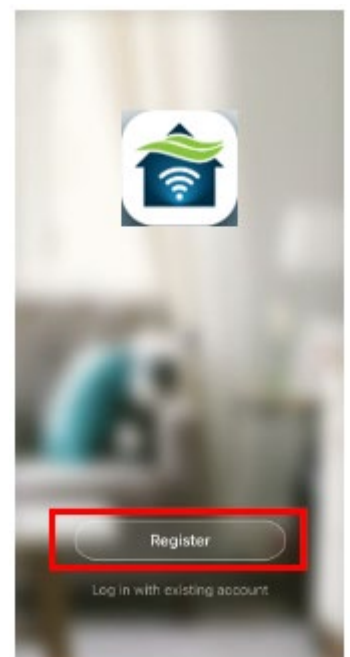
Search 【Emax Smart Home】 in App Store or Google Play to download it for free.

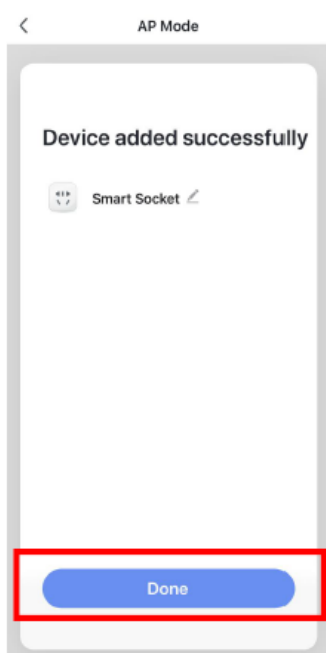
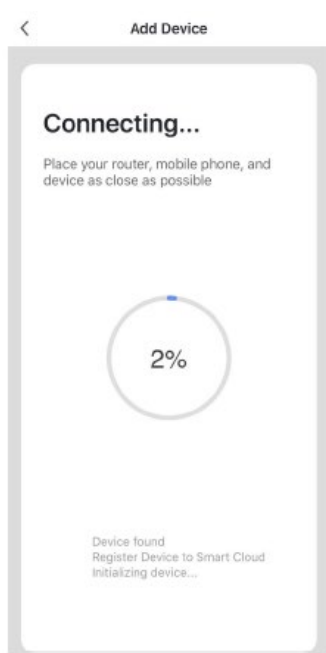
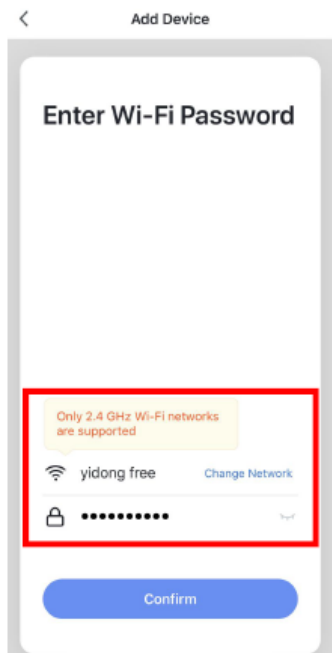
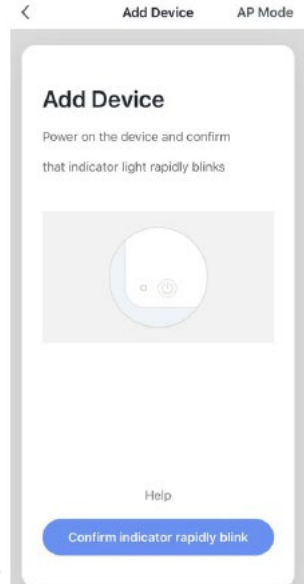
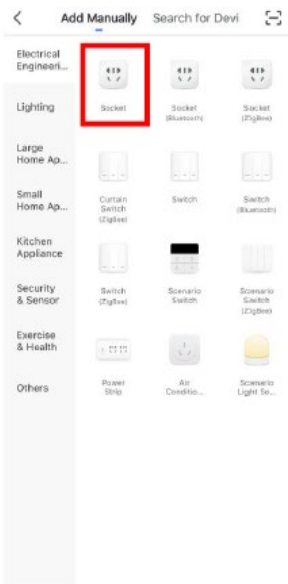
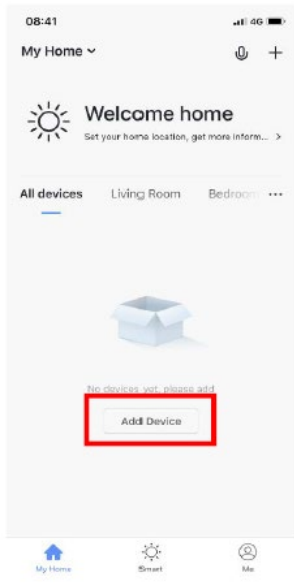
## 6. Create 【Emax Smart Home】 account

Open the App, then tap 【Register】 to create an account and then log in.

## 7. Add device

After tap 【Add Device】 , the simple guided setup through the Smart Life App have you up and running in minutes.

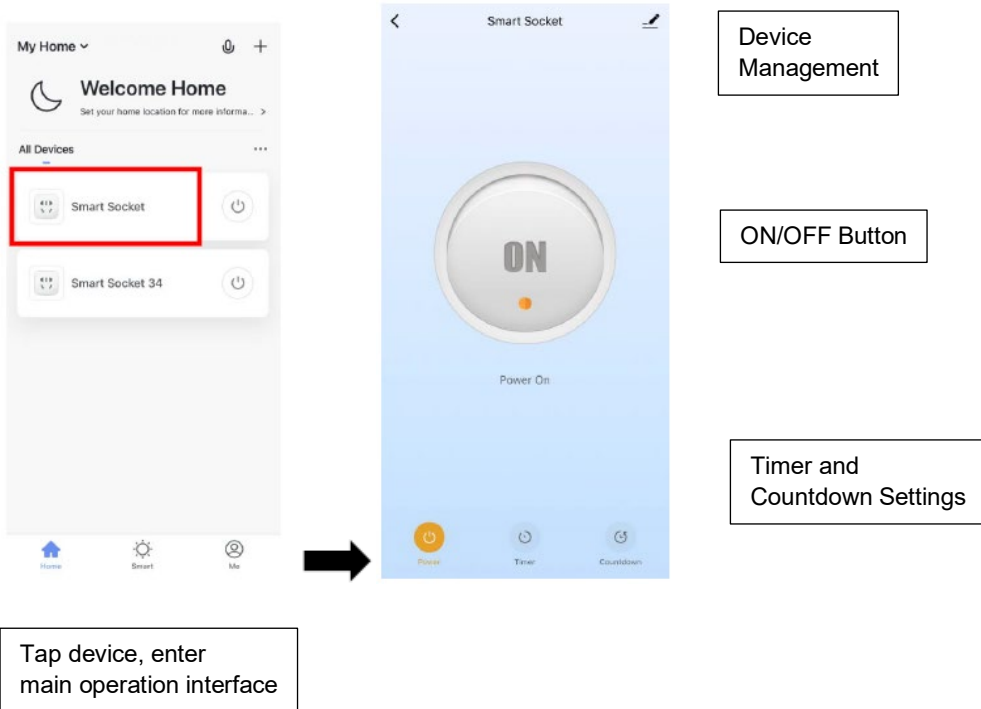




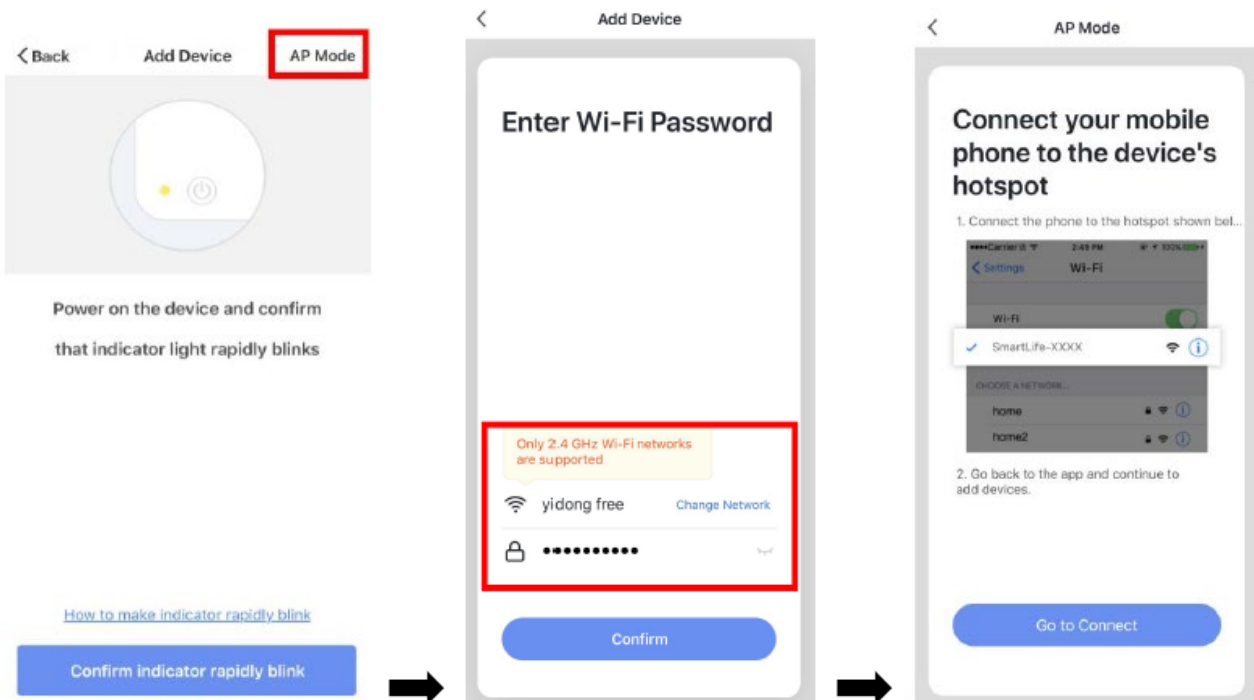
Waiting for appearing your desired Wi-Fi router/modem and input password. Then tap "Confirm".

Press and hold manual button for 5 seconds until LED flashes quickly

After adding device successfully, enter into device list interface via tapping 'Done'

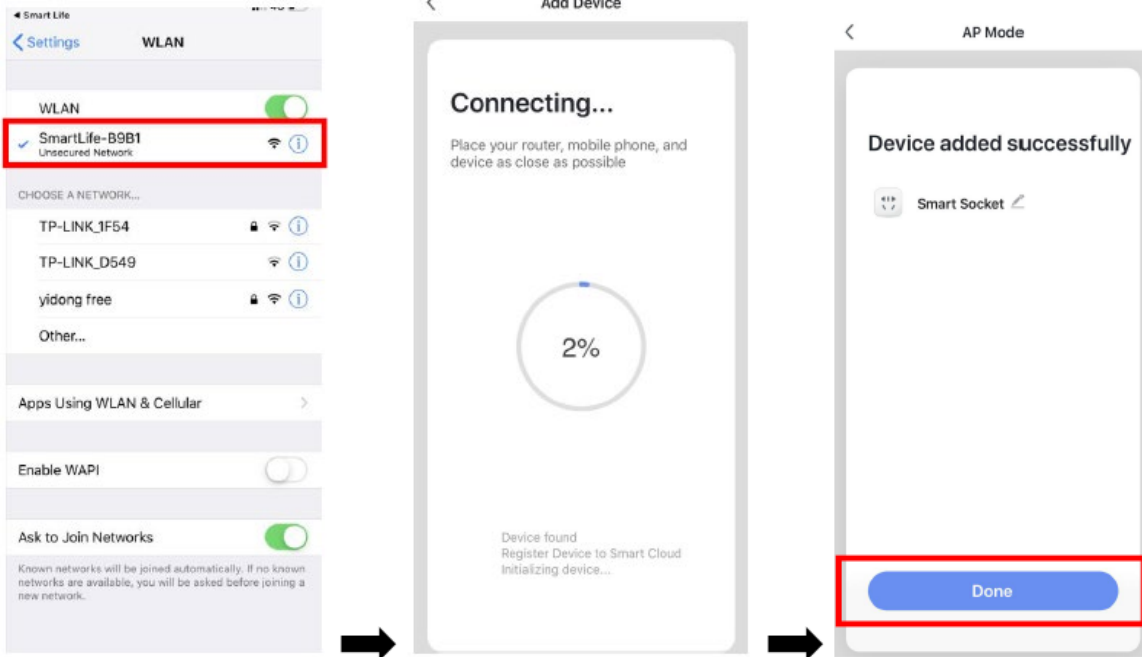


If fail to add device by above way, please pull out the device from power outlet and plug in again. Then use AP mode to add device.



Press and hold manual button for 5 seconds until LED flashes quickly. Then press and hold manual button for 5 seconds again until LED flashes slowly. It means the device enters into AP Mode. Next tap [AP Mode] to add device.

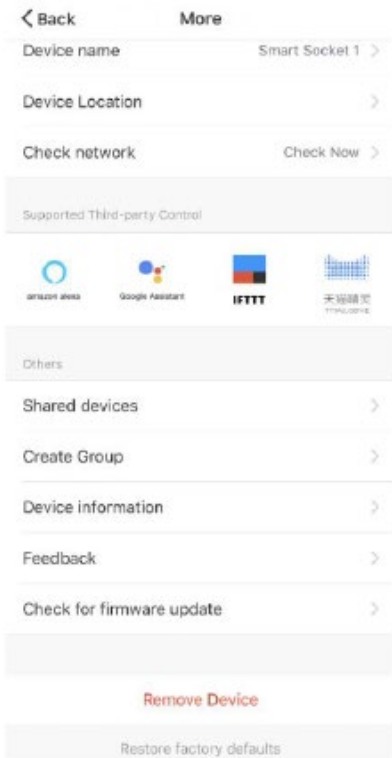
Waiting for appearing your desired Wi-Fi router/modem and input password. Then tap "Confirm".



Connect your mobile phone to the device's hotspot. Then go back the App and continue to add device.

After adding device successfully, enter into device list interface via tapping 'Done'

## 8. Device Management



Modify device name

Select room which you want to put in

Support kinds of voice control, tap each of them to know how to connect

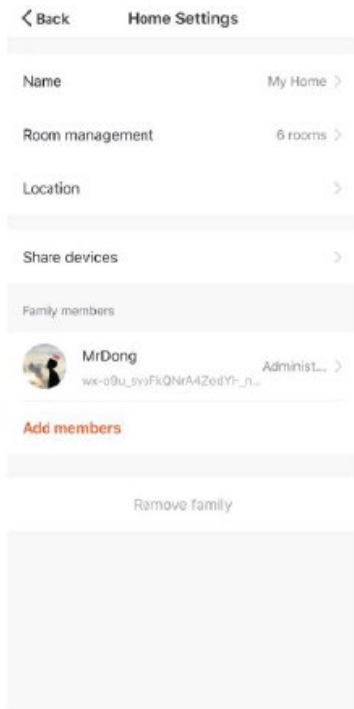
Share devices to other users

Set devices to control together

## 9. Family Management

In the Home page, Tap **【Me】** --- **【Family Management】** --- **【My Home】** ,enter into setting page.

User can invite family member to share devices with them. User can create rooms and put the related devices in the related rooms.



Modify name

Create rooms/ Put the related devices in the related rooms

Invite family member to share devices with them

Your permission in this home

Add member in this home

## 10. FAQ's:Tap **【Me】** --- **【FAQ】**

### 11. Blue/Red LED Flash Guideline

LED	DESCRIPTION
Red LED Flashes quickly	- Connect smart socket to the power, hold and press the button for 5 seconds, socket enters into configuration mode.
Blue LED ON	- Power on status indicator - Configuration successful under power on status (after configuration mode)
Blue LED Flashes slowly	- Smart socket is offline, and searching for the Wi-Fi network (under power on status).
LED OFF	- Power off status indicator - Configuration successful under power off status (after connection mode)

### Cautions

1. For safety, always switch off your appliances before connecting.
2. For indoor use only.
3. Whenever you change a wifi network, reconnection is required.
4. Do not plug in and out the device continually. Always wait for an interval of 10 seconds
5. For Pluggable equipment, the socket-outlet shall be installed near the equipment and shall be easily accessible.
6. To disconnect Voltage pull the plug.
7. Do not connect after each other

### Possible unsafe operation

- Particular requirements for vacuum cleaners and water-suction cleaning appliances
- Stationary cooking ranges, hobs, ovens and similar appliances
- Grills, toasters and similar portable cooking appliances

- Floor treatment machines and wet scrubbing machines
- Deep fat fryers, frying pans and similar appliances
- kitchen machines
- Particular requirements for appliances for skin or hair care
- Particular requirements for microwave ovens, including combination microwave ovens
- for room heaters
- Commercial electric cooking ranges, ovens, hobs and hob elements
- Commercial electric deep fat fryers
- Commercial electric griddles and griddle grills
- Commercial electric multi-purpose cooking pans
- Portable heating tools and similar appliances
- Commercial electric boiling pans
- Commercial electric grillers and toasters
- Sauna heating appliances
- Projectors and similar appliances
- Thermal-storage room heaters
- Commercial electric kitchen machines
- Floor treatment and floor cleaning machines for commercial use
- Spray extraction machines for commercial use
- Wet and dry vacuum cleaners, including power brush, for commercial use
- Electrical heating appliances for breeding and rearing animals
- Automatic machines for floor treatment for commercial use
- Portable immersion heaters
- Electric fence energizers
- Outdoor barbecues
- High pressure cleaners and steam cleaners
- Amusement machines and personal service machines
- Commercial microwave ovens
- Hand-held mains-operated garden blowers, vacuums and blower vacuums

## RECYCLE



After the implementation of the European Directive 2002/96/EU in the national legal system, the following applies:

Electrical and electronic devices may not be disposed of with domestic waste. Consumers are obliged by law to return electrical and electronic devices at the end of their service lives to the public collecting points set up for this purpose or point of sale. Details to this are defined by the national law of the respective country. This symbol on the product, the instruction manual or the package indicates that a product is subject to these regulations. By recycling, reusing the materials or other forms of utilising old devices, you are making an important contribution to protecting our environment

## WARRANTY

The product warranty is valid for 1 year from the date of purchase.

The warranty does not apply if the product is used for other purposes than its original purpose or if the product is used for commercial, professional or rental purposes.

The warranty does not cover damage to natural conditions or damage caused by incorrect storage.

For warranty claims, contact your dealer.